



# GX300

Automatic Mixer

- ◆ Intelligent Mixing
- ◆ Fast Clamping
- ◆ Faster Diagnostics

The **GX300** is the revolutionary intelligent & fast mixer that is developed by keeping our customer's needs in mind. With a simple user interface, it provides ease of operations and reliability.



The **GX300** is a very fast, high performance and intelligent automatic mixer. Its preset buttons, simple display, and user interface provide ease of operations that makes the life of the user easy. Its intelligent feature automatically secures maximum speed with pre-set mixing-time.

The variable speed with the improved clamping speed and the dynamic balance offers a very reliable mixer.

The **GX300** is future-ready and can be connected to the PC of a paint dispenser enabling you to easily obtain a clear overview of machine status and usage.

The GX300 has a simple 7-segment LED display that provides machine status to the user and also the error messages for quick diagnosis.

## Specifications & Technical Data

### General

- Medium and high volume paint turnover

### Can specs

- Max. product weight: 40 kg
- Min. height: 80 mm
- Max. height: 400 mm
- Plate diameter: 380 mm
- Suitable for oval cans
- Mixing of multiple cans possible

### Footprint & weight

- HWD: 101 x 82 x 87 (84) cm
- Weight: 235 kg

### Clamping

- Automatic, dedicated control

### Usage

- Rotating swing door (to be mounted left or right)
- Sliding door optional
- Loading plate fully extractable
- Cradle stops automatically at unloading position
- Display user interface: 7-segment LED with programmable pre-set buttons
- Variable speed (slow start), between 230 and 100 rpm, dynamic balance

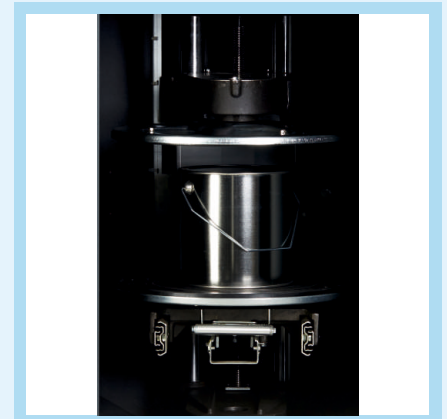
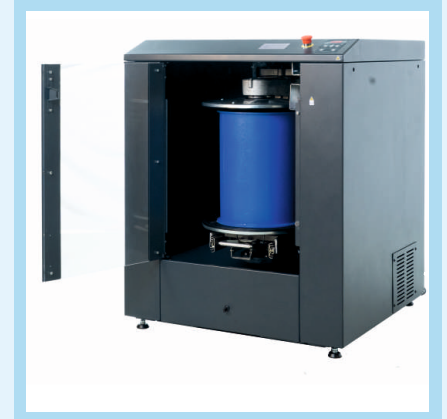
### Service

- Removable top cover and back panel
- Splash guard to protect from paint spillage, replaceable rubber on bottom clamp plate, possible service control via FFM Maintenance and/or display, USB port on PCB
- 750 Watt AC motor

### Installation

- Wheels and feet at bottom
- Power supply: 230V-50 / 60Hz or 115V / 60Hz
- Voltage adjustment at order

The fastest & smartest mixer in the market which reduces the total mixing time by 50%”




For further enquiries, please contact

### FAST & FLUID MANAGEMENT

**India:** Survey No. 256, GIDC, Manjusar, Savli, Near Bombardier Circle, Vadodara 391770 Gujarat Tel: 2667 662 001 Email: info.fmt@idexcorp.com

**SE Asia:** 18 Boon Lay Way #09-97/98, Tradehub 21, Singapore 609966 Tel +65 6684 7318 Email: FAU-Sales@idexcorp.com

**Oceania:** 10 Resolution Drive, Unanderra NSW 2526, Australia Tel +61 2 4271 7111 Email: FAU-Sales@idexcorp.com

 <http://asia.fast-fluid.com/>



GX300-Ver-01 - A4 - 01-2021

